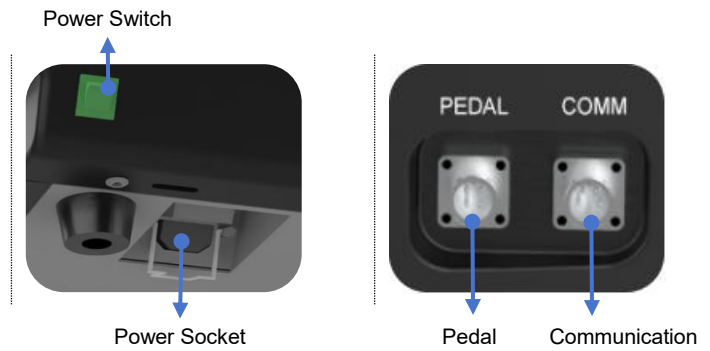


# LP-V1 V1.1 Start Guide Rev00

## 1. Power on

- Connect the pedal to the machine
- Plug the power cord and snap on the buckle
- Turn on the power switch



## 2. Feeding

**Step 1:** Wind the paper on the tray around the shaft according to the arrow.

**Step 2:** Press the feed button. Feeding is successful when paper appears at the outlet.



## 3. Operation

Parameter range: output length (10~999cm)      output pads (1~99999 pcs)  
 output speed (3 settings, third setting recommended)

Trigger by: Pedal or button

Working status: The machine is working      The machine is stopped

Mode	Operation
Manual	Press pedal or  button to start, and release to stop. The length of the paper pad output depends on the trigger time. Releasing after triggering produces shortest paper length.
Fixed	The paper pad is dispensed according to the preset length, with two dispensing methods available. <ul style="list-style-type: none"> <li> Only produce one pad when triggering.</li> <li> Once a segment is removed, the machine will automatically produce the next one.</li> </ul>
Batch	Set the target length and quantity of paper pads, and upon triggering, the machine will dispense the preset quantity before stopping. And it allows for pausing during production.  Reset the produced pads.