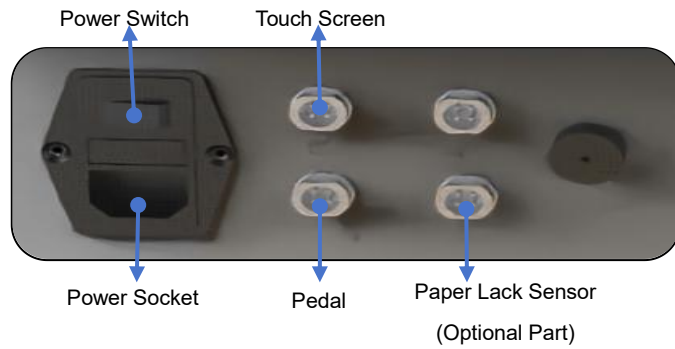


LP-C2 Start Guide

1. Power on

- Connect the screen to the machine
- Connect the pedal to the machine
- Make sure the E-stop button is released
- Close all the covers
- Turn on the power switch



2. Feeding

Step 1: Wind the folded paper on the tray around the shaft according to the arrow.

Step 2: Roll up the front end of the paper upwards and push it towards the transmission area until it can no longer be pushed.

Step 3: Press the feed button. Feeding is successful when paper appears at the outlet. (If no paper appears, repeat Step 2.)



3. Operation

Parameter range: output length (25~3600cm) output pads (0~99999 pcs)
 output speed (3 settings, third setting recommended)

Trigger by: Pedal or button

Working status: The machine is working The machine is stopped

Mode	Operation
Manual	Press pedal or button to start, and release to stop. The length of the paper pad output depends on the trigger time. Releasing after triggering produces shortest paper length.
Fixed	The paper pad is dispensed according to the preset length, with two dispensing methods available. Only produce one pad when triggering. Once a segment is removed, the machine will automatically produce the next one.
Batch	Set the target length and quantity of paper pads, and upon triggering, the machine will dispense the preset quantity before stopping. And it allows for pausing during production. Reset the produced pads.
Preset	There are 8 preset lengths for paper pads, and the machine produces a pad of the selected length based on the user's input. The operation is same as Fixed.
Recipe	A series of production recipes with groups various lengths and quantities can be set. The operation is same as Fixed. There are two modes available: single-cycle and multi-cycle Stop after completing the entire set of production recipes. Continuously output paper in a cycle until the operator intervenes to stop or the paper run out. Reset the produced pads. It will start from the first set of parameters when triggering.