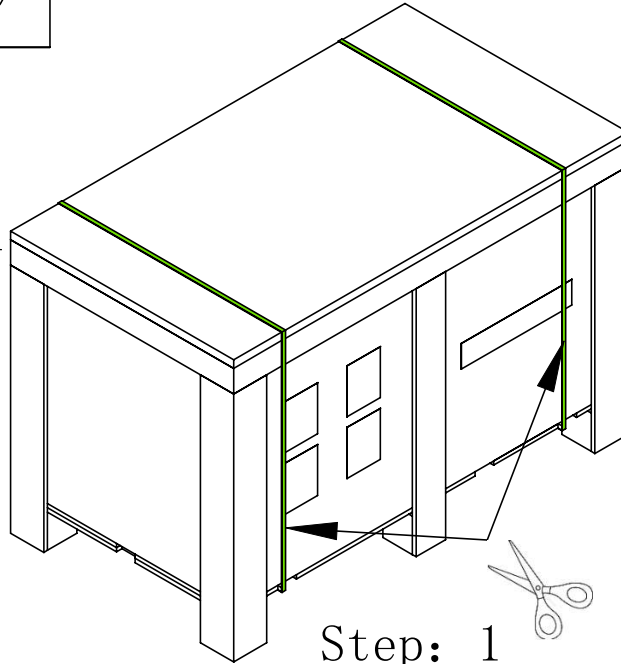


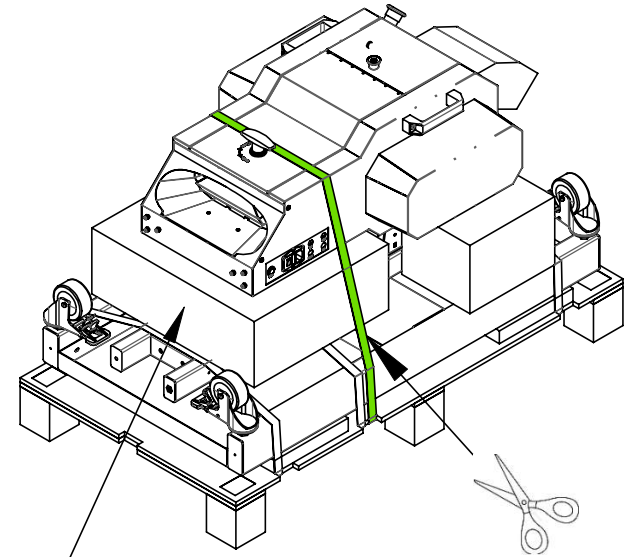
Machine unboxing instructions

Note

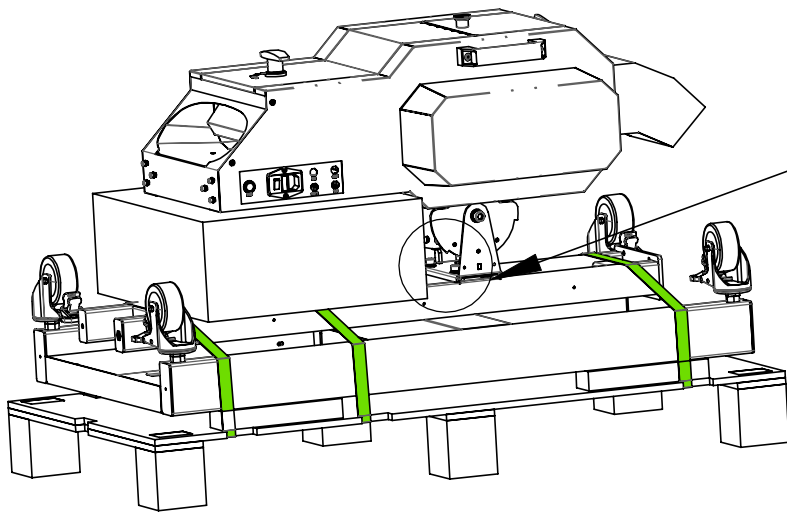
1. UNpacking screws can not be reused again
2. Please follow the unpacking steps to unpack the box



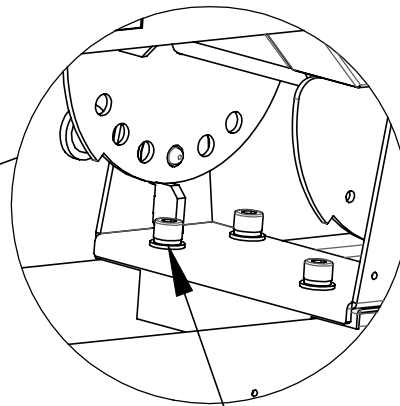
Step: 1



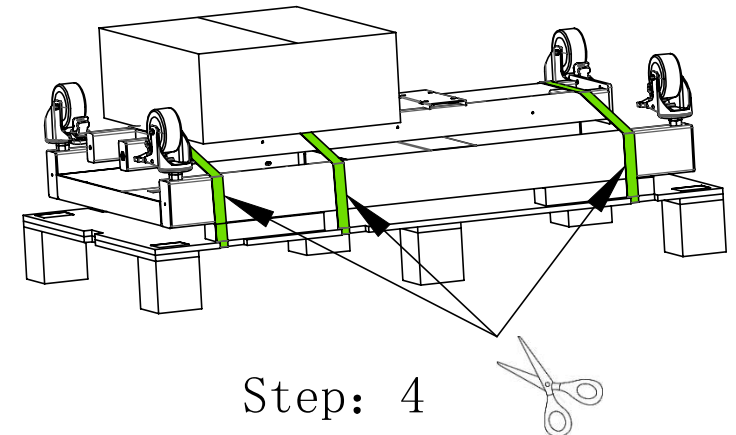
The accessory box contains wrenches
Step: 2



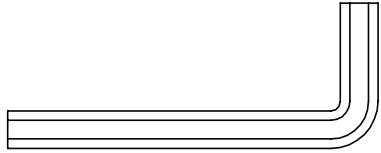
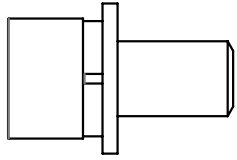
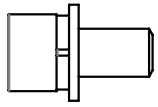
Step: 3



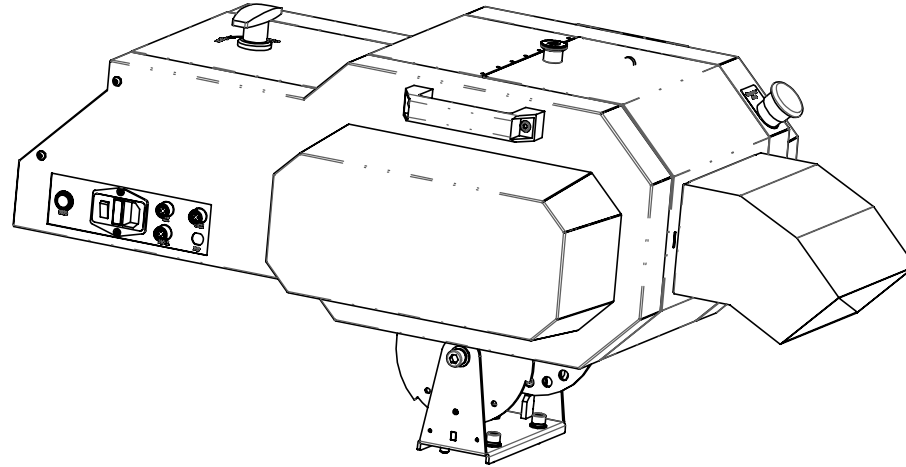
6mm Allen wrench
4 screws



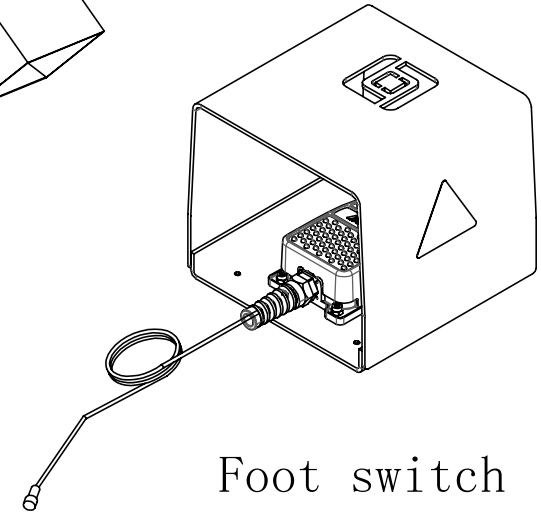
Step: 4



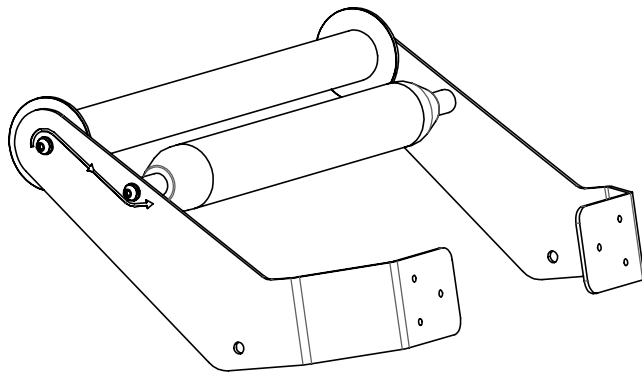
machine assembly instructions:It is best to fix the fuselage on the installed support first



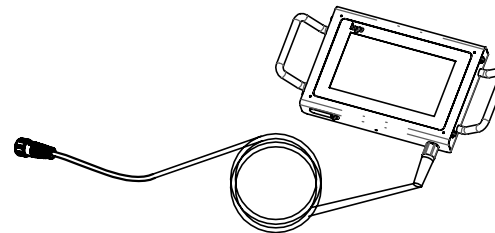
KRAFT PAPER MACHINE



Foot switch



Tailstock

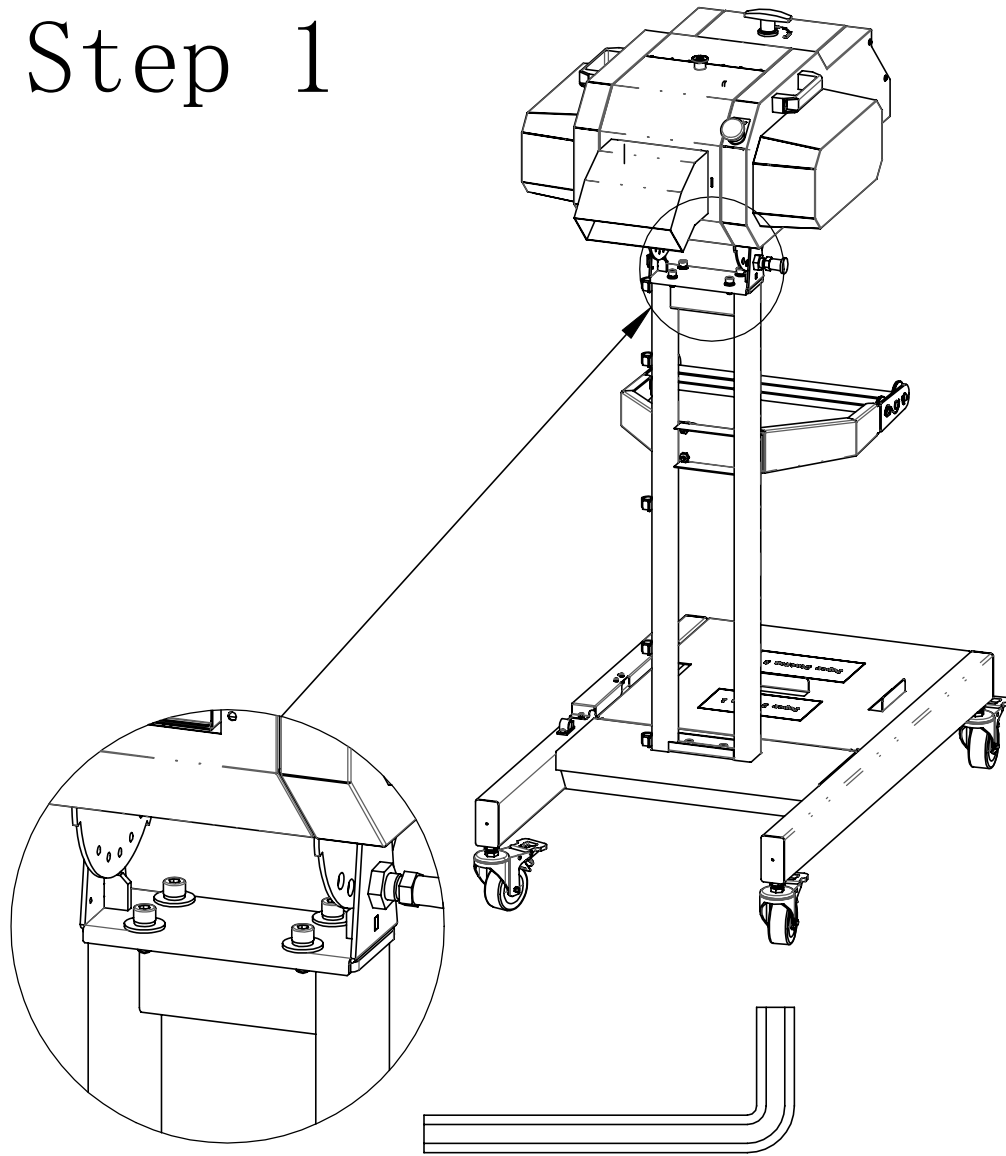


Touch screen



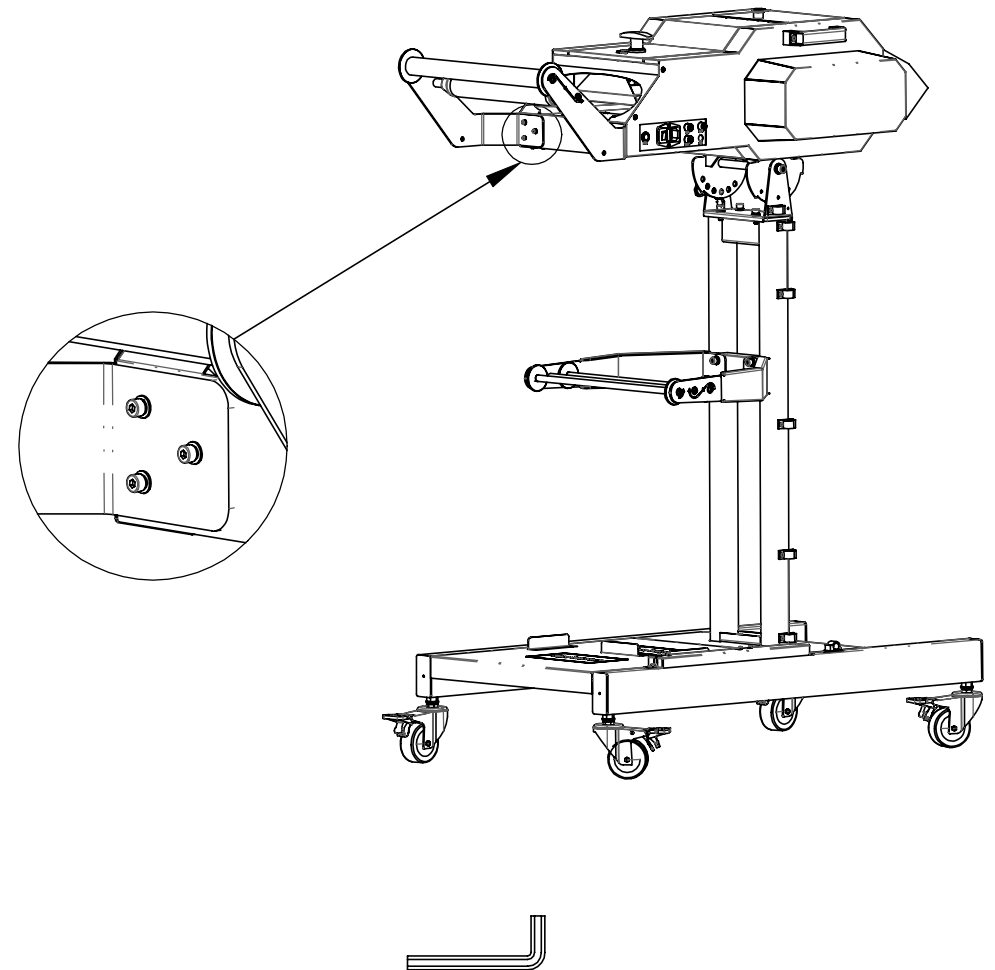
Power cable

Step 1



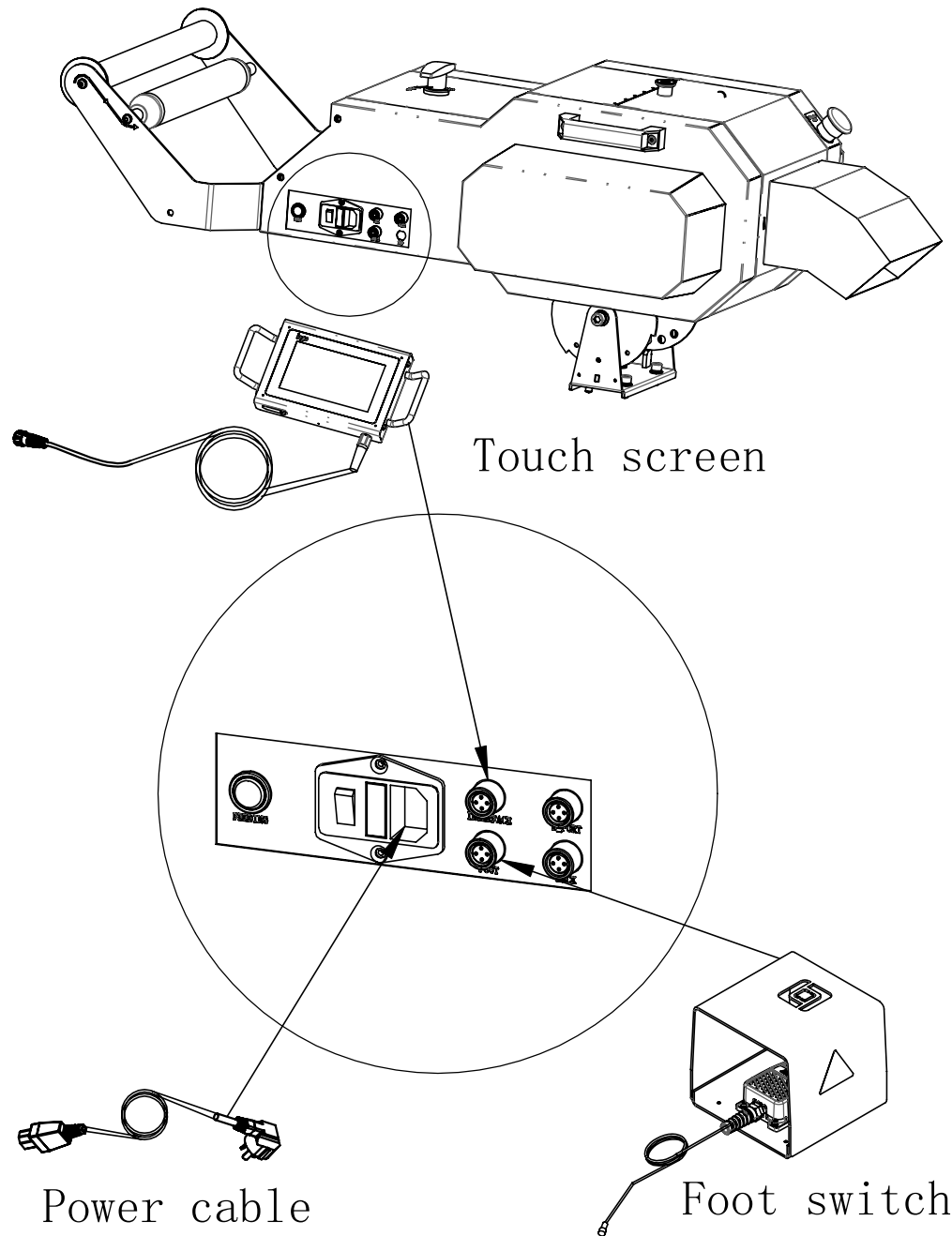
6mm Allen wrench
4 Hexagon socket head screw
M8*20 (including spring washer
and flat washer of M8)

Step 2



3mm Allen wrench
6 Hexagon socket head
screw combination M4*10

Step 3



Step 4

